

# **Labor Demand Update**

## **April 2009**

**Prepared by:**  
**Division of Labor Market and**  
**Demographic Research**

May 15, 2009



Chart 1.

### New Jersey Private Sector Employment Change January 2008 - March 2009

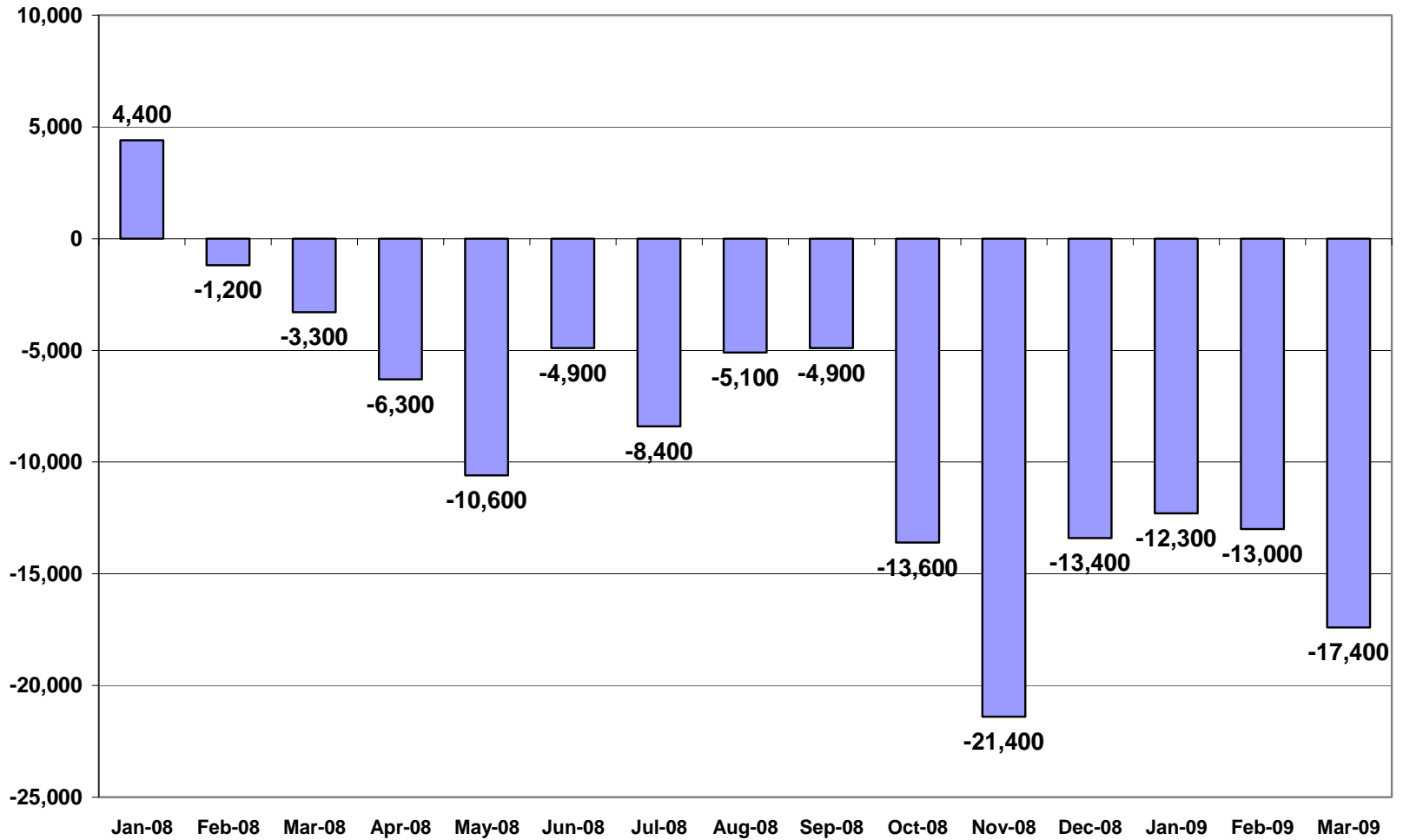


Chart 2.

### New Jersey Private Sector Employment Change by Industry December 07 - March 09: Total Jobs -131,100

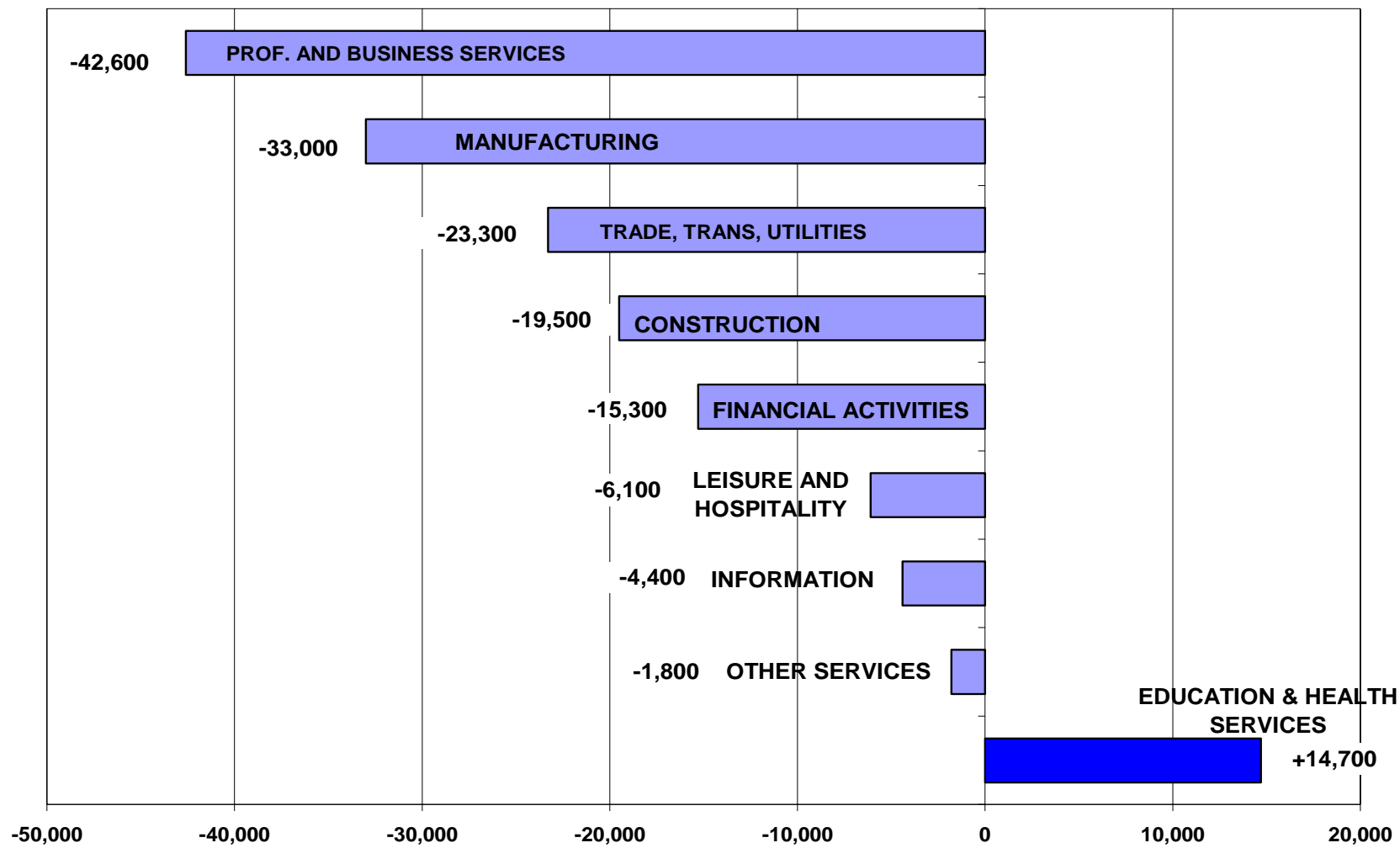
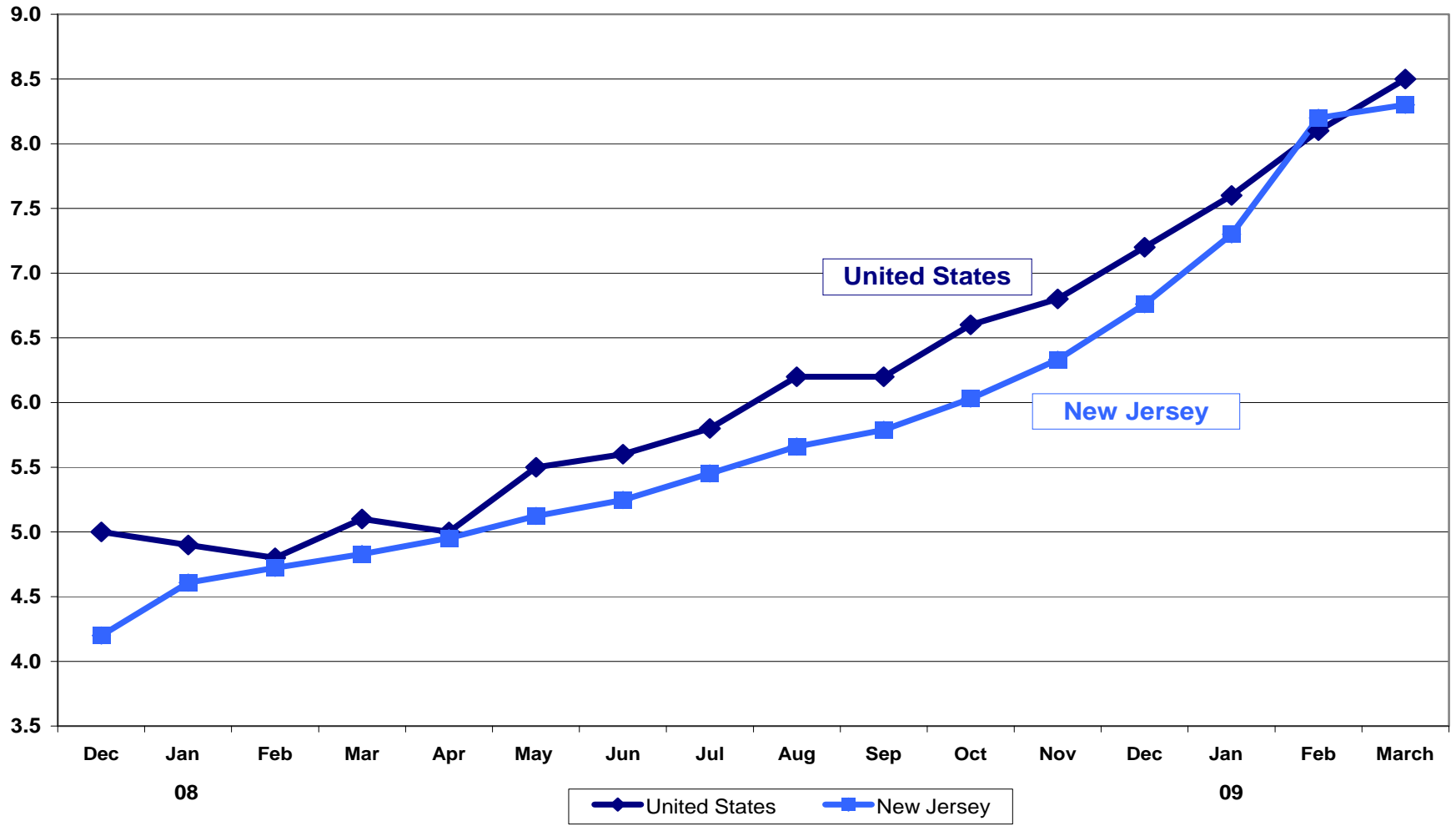
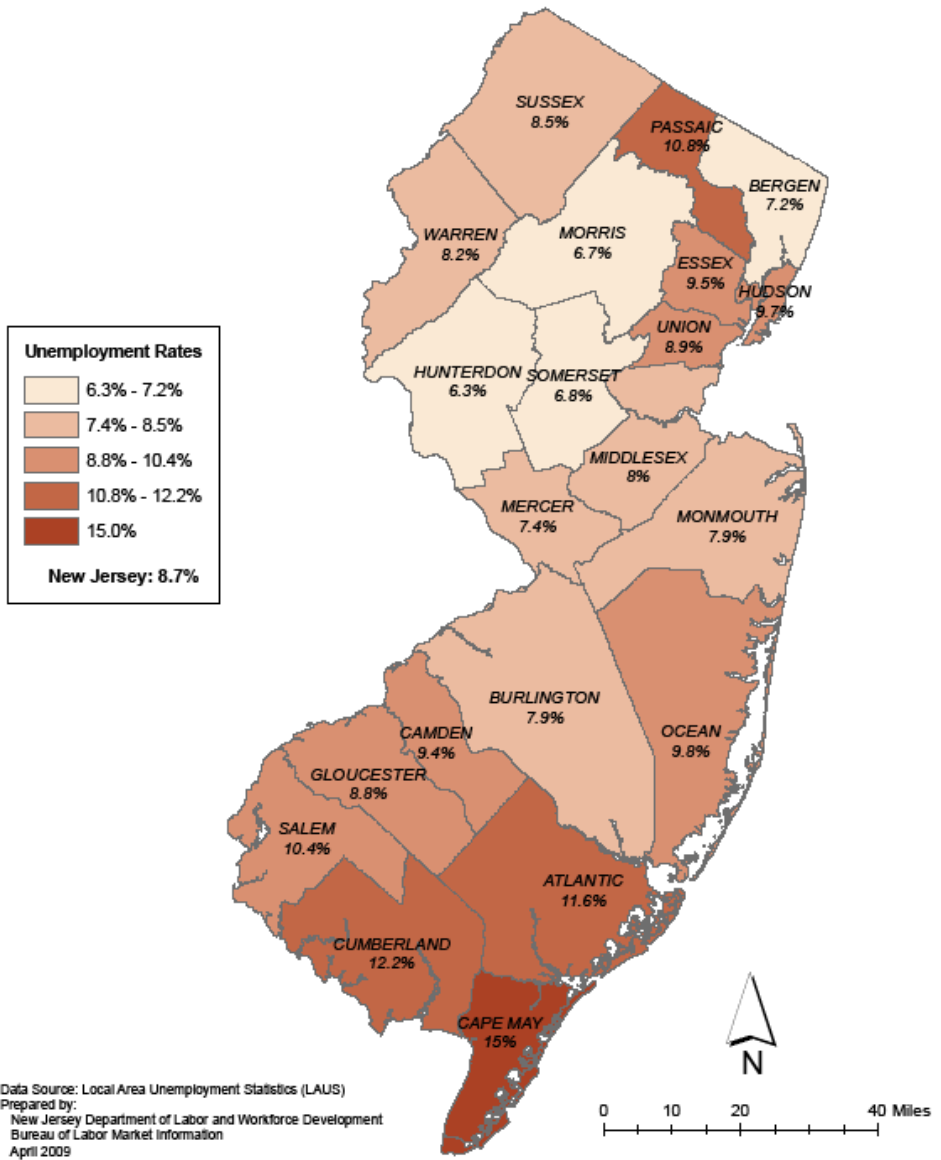


Chart 3.

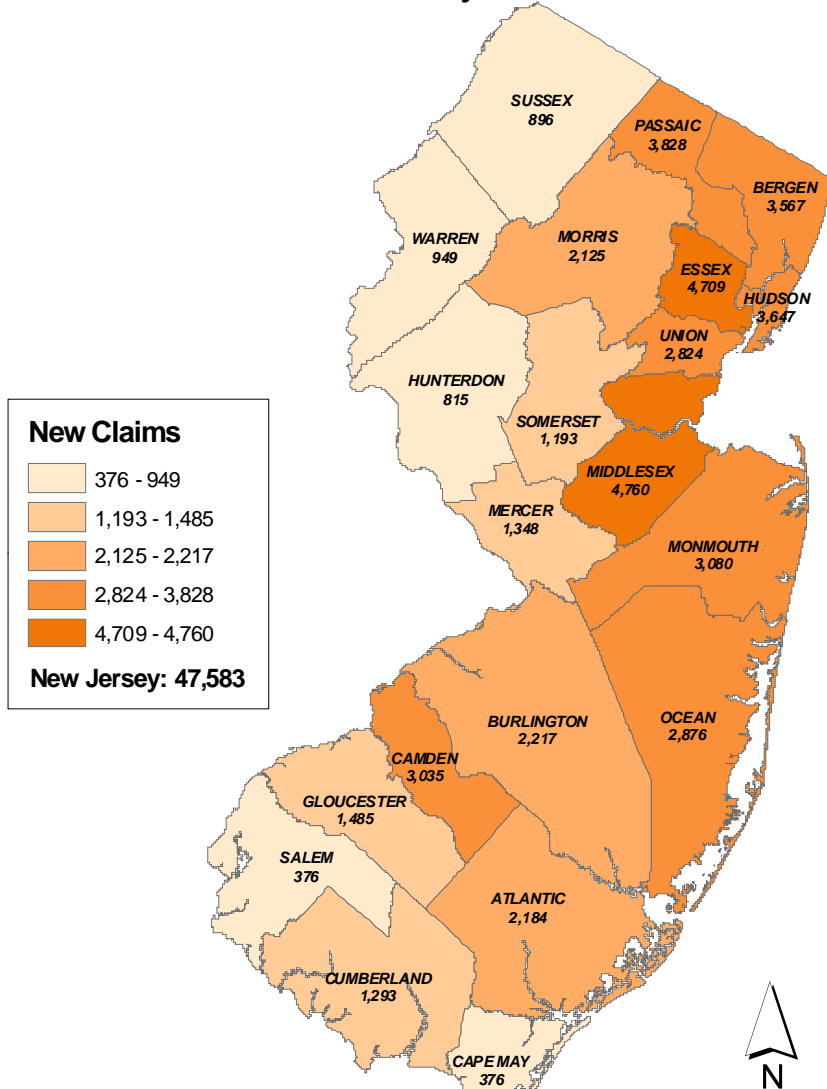
### Unemployment Rates, New Jersey vs. United States December 2007 - March 2009



## New Jersey Counties March 2009 - Unemployment Rates (Preliminary, Not Seasonally Adjusted)



## Distribution of New Unemployment Claims April 2009 New Jersey Counties

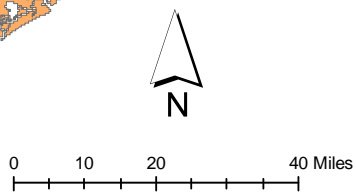


**New Claims**

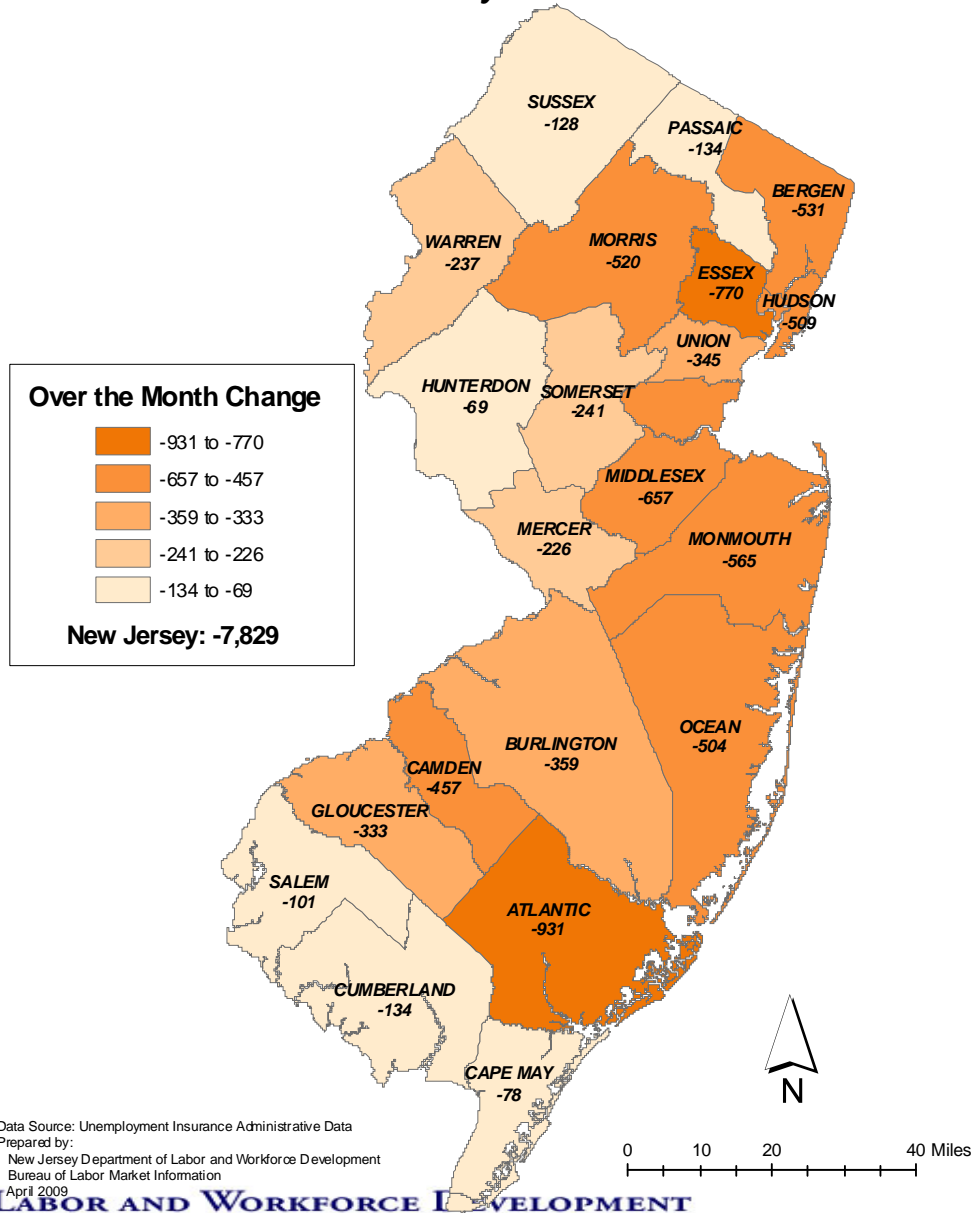
- 376 - 949
- 1,193 - 1,485
- 2,125 - 2,217
- 2,824 - 3,828
- 4,709 - 4,760

**New Jersey: 47,583**

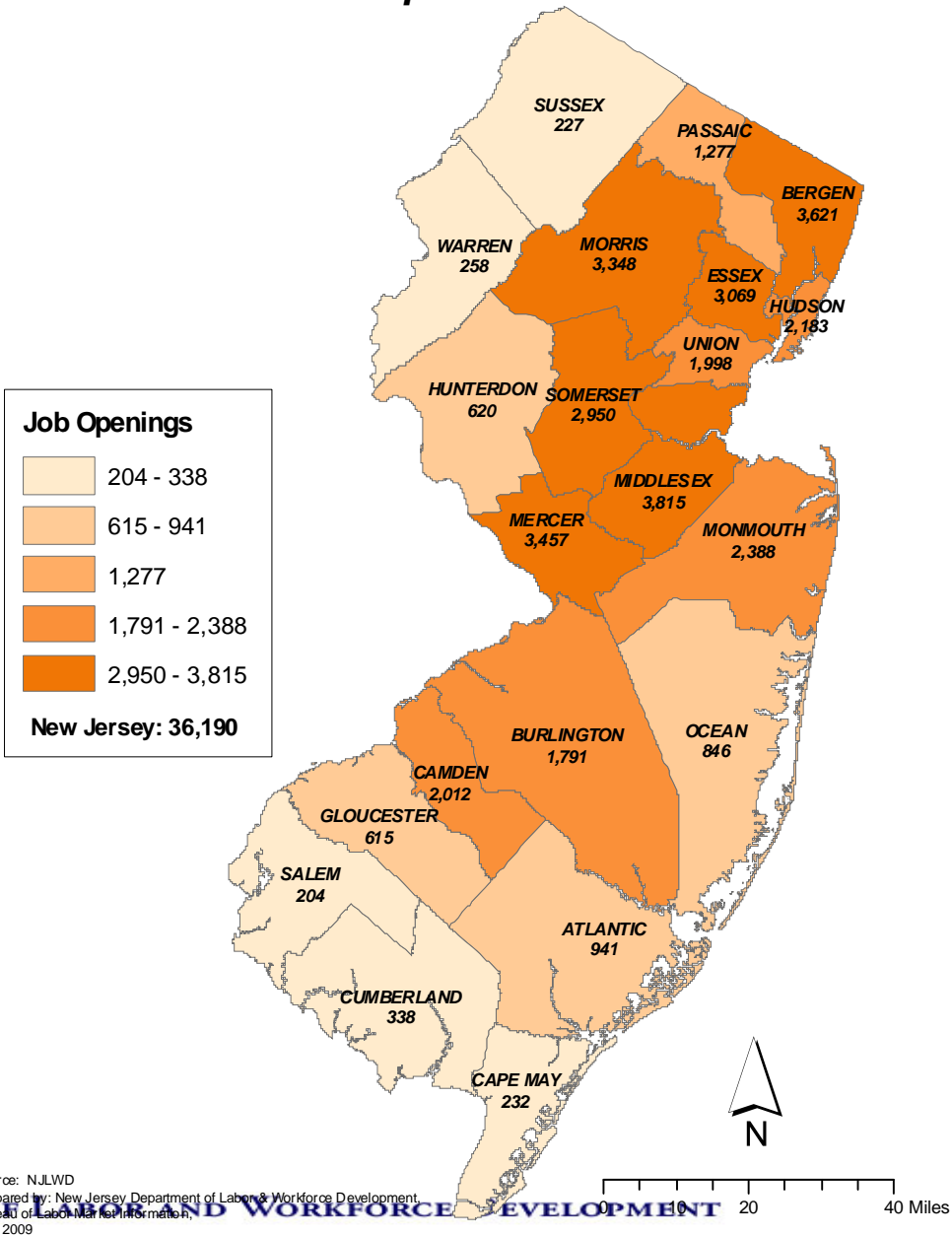
Data Source: Unemployment Insurance Administrative Data  
 Prepared by:  
 New Jersey Department of Labor and Workforce Development  
 Bureau of Labor Market Information  
 May 2009



**Over the Month Change in New Unemployment Claims  
March - April 2009  
New Jersey Counties**



## Distribution of Job Openings by County April 2009



# Monthly Update Report on Industries and Companies Hiring

- Each month, LWD will release a report regarding industries and companies hiring
- Report will contain information with local data

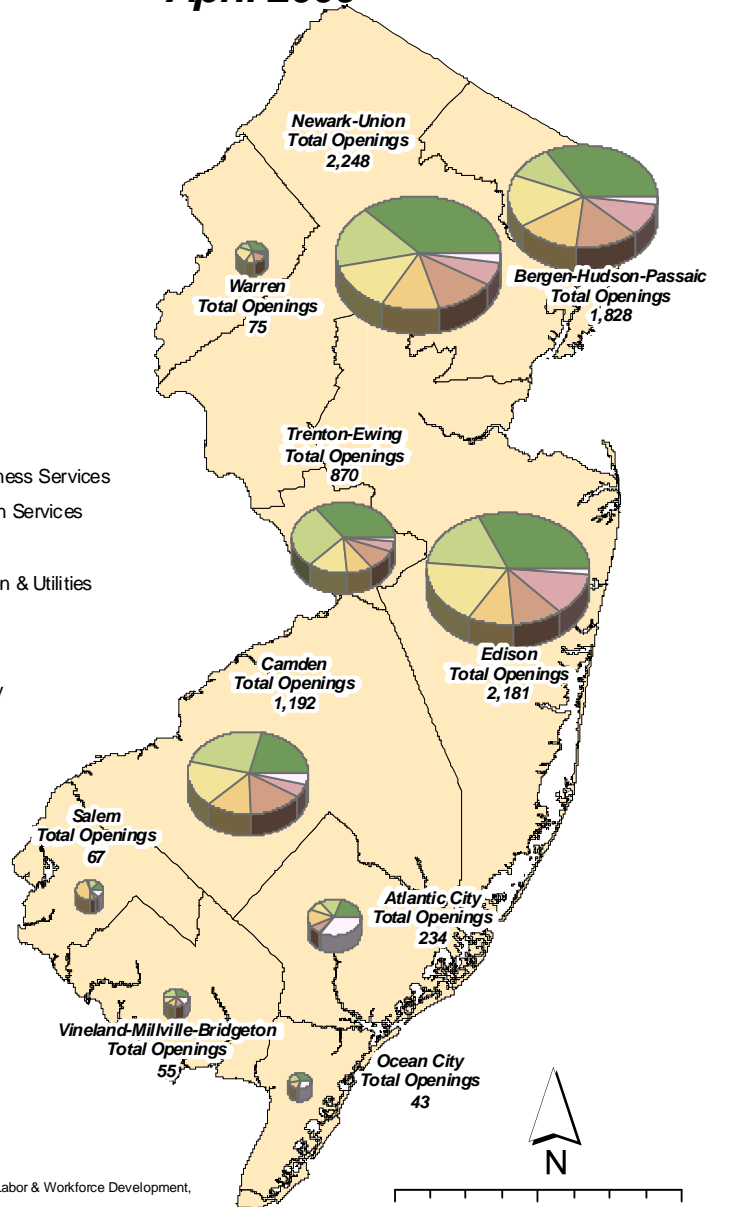


# Largest Industry Demand by Labor Area April 2009

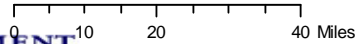
## Industry Demand



- Professional & Business Services
- Educational & Health Services
- Manufacturing
- Trade, Transportation & Utilities
- Financial Activities
- Information
- Leisure & Hospitality



Source: NJLWD  
 Prepared by: New Jersey Department of Labor & Workforce Development,  
 Bureau of Labor Market Information,  
 May 2009



# Companies Hiring: Statewide

Company Name	Openings	Company Name	Openings
BLOCKBUSTER INC.	221	VALLEY NATIONAL BANCORP	51
THE DRESS BARN, INC.	151	JOHNSON & JOHNSON	50
BAYADA NURSES	108	PUBLIC SERVICE ENTERPRISE GROUP	49
SHOPRITE	107	INTEGRA LIFESCIENCES HOLDINGS	45
NOVARTIS INTERNATIONAL AG	95	LIFE TIME FITNESS, INC	45
BANK OF AMERICA, N.A.	94	DAWN FOOD PRODUCTS, INC.	43
JPMORGAN CHASE & CO.	91	L-3 COMMUNICATIONS HOLDINGS, INC.	43
KENNEDY HEALTH SYSTEM	91	PNC GLOBAL INVESTMENT SERVICING INC	40
MACY'S, INC.	90	QUEST DIAGNOSTICS INCORPORATED	39
THE PNC FINANCIAL SERVICES GROUP, INC.	90	PHH CORPORATION	37
THE HOME DEPOT, INC.	81	PILOT CORPORATION	37
WACHOVIA CORPORATION	79	TRUMP ENTERTAINMENT RESORTS	37
LOCKHEED MARTIN CORPORATION	74	MARRIOTT INTERNATIONAL, INC.	35
SOMERSET MEDICAL CENTER	67	BAYSHORE COMMUNITY HOSPITAL	32
BAYER HEALTH CARE	62	NORDSTROM, INC.	32
COMMERCE BANCORP, INC.	62	TOYS "R" US, INC.	32
WHOLE FOODS MARKET, INC.	57		



**Companies Hiring by County  
April 2009**

Company Name	County	Openings	Company Name	County	Openings
TRUMP ENTERTAINMENT RESORTS	Atlantic	37	CRITICALCONNECTION	Camden	29
BORGATA HOTEL CASINO & SPA	Atlantic	22	L-3 COMMUNICATIONS HOLDINGS, INC.	Camden	25
WYNDHAM WORLDWIDE CORPORATION	Atlantic	13	COMMERCE BANCORP, INC.	Camden	21
BAYADA NURSES	Atlantic	12	MOREYS PIER	Cape May	11
CRITICALCONNECTION	Atlantic	10	MEDICAL STAFFING NETWORK, INC.	Cape May	8
KPMG L.L.P.	Bergen	72	CONECTIV	Cape May	6
COMPUTERWORK.COM	Bergen	46	CRITICALCONNECTION	Cumberland	12
EXPRESS EMPLOYMENT	Bergen	45	SEABROOK HOUSE	Cumberland	9
STRYKER CORPORATION	Bergen	41	HS REHAB HOSP OF SOUTH JERSEY	Cumberland	8
CRITICALCONNECTION	Bergen	39	CUMBERLAND REGIONAL SCHOOL	Cumberland	6
BAYADA NURSES	Burlington	36	SAINT BARNABAS HEALTH CARE SYSTEM	Essex	61
CRITICALCONNECTION	Burlington	35	MONTCLAIR STATE UNIVERSITY	Essex	50
COMMERCE BANCORP, INC.	Burlington	34	COMPUTERWORK.COM	Essex	47
INTELLIGENCE CAREERS	Burlington	31	PRUDENTIAL FINANCIAL	Essex	33
SHOPRITE	Burlington	26	COMPANY CONFIDENTIAL	Essex	32
KENNEDY HEALTH SYSTEM	Camden	96	ROWAN UNIVERSITY	Gloucester	22
BAYADA NURSES	Camden	36	AMF BOWLING, INC.	Gloucester	16



**Companies Hiring by County**  
**April 2009**

<b>Company Name</b>	<b>County</b>	<b>Openings</b>	<b>Company Name</b>	<b>County</b>	<b>Openings</b>
KOHL'S DEPARTMENT STORES, INC.	Gloucester	13	COVANCE INC.	Mercer	26
BLOCKBUSTER INC.	Gloucester	12	PRINCETON HEALTHCARE SYSTEM	Mercer	26
CRITICALCONNECTION	Gloucester	12	THE HOME DEPOT, INC.	Middlesex	51
COMPUTERWORK.COM	Hudson	41	INTEGRA LIFESCIENCES HOLDINGS	Middlesex	45
THE JERSEY JOURNAL EMPLOYMENT	Hudson	40	DAWN FOOD PRODUCTS, INC.	Middlesex	43
NET-TEMPS, INC	Hudson	21	COMPUTERWORK.COM	Middlesex	33
AMERITRADE HOLDING CORP.	Hudson	18	DOW JONES & COMPANY, INC.	Middlesex	29
DEPARTMENT OF VETERANS AFFAIRS	Hudson	17	SHOPRITE	Monmouth	44
COMPUTERWORK.COM	Hunterdon	17	INTELLIGENCE CAREERS	Monmouth	41
PILOT CORPORATION	Hunterdon	15	BAYSHORE COMMUNITY HOSPITAL	Monmouth	32
HUNTERDON HEALTHCARE SYSTEM	Hunterdon	14	CRITICALCONNECTION	Monmouth	19
COMPANY CONFIDENTIAL	Hunterdon	8	WACHOVIA CORPORATION	Monmouth	19
A&P SUPERMARKETS	Hunterdon	7	NOVARTIS INTERNATIONAL AG	Morris	94
PRINCETON UNIVERSITY	Mercer	90	NET-TEMPS, INC	Morris	57
LOCKHEED MARTIN CORPORATION	Mercer	66	BAYER HEALTH CARE	Morris	33
COMPUTERWORK.COM	Mercer	55	COMPUTERWORK.COM	Morris	31



**Companies Hiring by County**  
**April 2009**

<b>Company Name</b>	<b>County</b>	<b>Openings</b>	<b>Company Name</b>	<b>County</b>	<b>Openings</b>
EXPRESS EMPLOYMENT	Morris	29	SOMERSET MEDICAL CENTER	Somerset	67
CRITICALCONNECTION	Ocean	30	VERIZON COMMUNICATIONS INC.	Somerset	51
BAYADA NURSES	Ocean	14	JOHNSON & JOHNSON	Somerset	43
SHOPRITE	Ocean	11	EXPRESS EMPLOYMENT PROFESSIONALS	Somerset	34
SOUTHERN OCEAN COUNTY HOSPITAL	Ocean	11	CRITICALCONNECTION	Sussex	13
COMMUNITY MEDICAL CENTER	Ocean	10	NMHNJ	Sussex	11
VALLEY NATIONAL BANCORP	Passaic	58	BAYADA NURSES	Sussex	6
NET-TEMPS, INC	Passaic	35	BLOCKBUSTER INC.	Union	25
TOYS "R" US, INC.	Passaic	29	COMPANY CONFIDENTIAL	Union	25
BAYER HEALTH CARE	Passaic	27	TRINITAS HOSPITAL	Union	25
BLOCKBUSTER INC.	Passaic	25	COMPUTERWORK.COM	Union	23
PILOT CORPORATION	Salem	9	BAYADA NURSES	Union	18
PUBLIC SERVICE ENTERPRISE GROUP	Salem	9	CRITICALCONNECTION	Warren	17
AXELON SERVICES CORP	Salem	6	MARS, INCORPORATED	Warren	12
COMPUTERWORK.COM	Somerset	71	BLOCKBUSTER INC.	Warren	8



# Tool 2:

*Real Time Jobs in Demand* - A new report that has the information needed to answer various questions, such as:

- Which jobs are in demand today?
- Which jobs will be in demand in the future?
- Which jobs are experiencing a labor shortage?
- How much are these jobs paying?
- Do I have the necessary credentials for my next job?



# Real Time Jobs in Demand

## April 2009, All Jobs

Rank	Occupation Title	NJ # New Job Openings	NJ # New Unemp. Claims	NJ Average Annual # of Projected Openings	NJ Average Hourly Wage	NJ Labor Shortage (Openings-Claims)	US % with BA	US % with Some College	US % with High School	NJ Occupational License Needed	SCORE
(A)	(B)	(C)	(D)	(E)	(F)	(G)	(H)	(I)	(J)	(K)	(M)
<b>Top 50 Jobs, All Training and Education Combined</b>											
1	Physical Therapists	574	2	210	\$37.56	572	89.3	8.8	1.8	Physical Therapist Or Phys. Therapist Assistant; School Physical Therapist	93.4
2	Occupational Therapists	445	3	100	\$35.97	442	90.3	9.0	0.0	Occupational Therapist/ Therapy Assistant ; School Occupational Therapist	90.4
3	Speech-Language Pathologists	132	0	80	\$36.49	132	97.9	0.0	0.0	Speech Pathologist/Audiologist; School Speech-Language Specialist	89.8
4	Physicians and Surgeons, All Other	97	7	340	\$76.28	90	.	.	.	Physician	88.6
5	Natural Sciences Managers	445	14	80	\$68.97	431	92.8	0.0	0.0		87.6
6	Computer Hardware Engineers	561	23	100	\$46.20	538	70.0	22.8	7.2		86.8
7	Computer Systems Analysts	1049	188	910	\$41.06	861	68.4	24.6	7.0		86.8
8	Computer Software Engineers, Applications	827	217	1120	\$43.07	610	84.8	13.0	2.2		86.6
9	Computer Programmers	1005	103	470	\$39.90	902	72.7	21.8	5.5		86.6
10	Computer Software Engineers, Systems Software	284	54	500	\$47.42	230	84.8	13.0	2.2		86.4



# Real Time Jobs in Demand

## April 2009, All Jobs

Rank	Occupation Title	NJ # New Job Openings	NJ # New Unemp. Claims	NJ Average Annual # of Projected Openings	NJ Average Hourly Wage	NJ Labor Shortage (Openings-Claims)	US % with BA	US % with Some College	US % with High School	NJ Occupational License Needed	SCORE
(A)	(B)	(C)	(D)	(E)	(F)	(G)	(H)	(I)	(J)	(K)	(M)
<b>Top 50 Jobs, All Training and Education Combined</b>											
11	Computer and Information Systems Managers	960	279	280	\$63.37	681	72.5	23.0	4.6		86.2
12	Registered Nurses	1186	206	2320	\$34.09	980	56.2	42.7	1.0	Advanced Practice Nurse; School Nurse; Registered Nurse	85.9
13	Medical and Health Services Managers	616	78	200	\$48.11	538	56.6	32.0	11.4	Bio-Analytical Laboratory Director; Laboratory Director; Assisted Living Administrator; Nursing Home Administrator	85.9
14	Network Systems and Data Communications Analysts	377	67	510	\$39.75	310	57.1	34.8	8.1		85.6
15	Securities, Commodities, and Financial Services Sales Agents	366	122	420	\$49.29	244	66.6	23.1	10.3	Securities Agent	85.6
16	Financial Managers	712	265	240	\$59.82	447	59.9	27.2	12.9	County Finance Officer; Municipal Finance Officer	85.5
17	Marketing Managers	705	192	170	\$62.61	513	68.7	22.1	9.2		85.3



# Real Time Jobs in Demand

## April 2009, All Jobs

Rank	Occupation Title	NJ # New Job Openings	NJ # New Unemp. Claims	NJ Average Annual # of Projected Openings	NJ Average Hourly Wage	NJ Labor Shortage (Openings-Claims)	US % with BA	US % with Some College	US % with High School	NJ Occupational License Needed	SCORE
(A)	(B)	(C)	(D)	(E)	(F)	(G)	(H)	(I)	(J)	(K)	(M)
<b>Top 50 Jobs, All Training and Education Combined</b>											
18	Lawyers	207	102	720	\$57.72	105	99.1	0.7	0.2	Attorney	85.1
19	Education Administrators, Postsecondary	202	34	130	\$47.25	168	78.4	15.2	6.4		84.6
20	Education Administrators, Elementary and Secondary School	100	24	290	\$47.95	76	78.4	15.2	6.4	School Business Administrator; Director Of Student Personnel Services; School Administrator;	84.5
21	Sales Representatives, Services, All Other	762	439	930	\$33.84	323	48.3	32.3	19.4	Home Repair Salesman; Cemetery Salesperson	84.2
22	Industrial Engineers	555	49	100	\$36.85	506	73.9	18.5	7.6		84.0
23	Environmental Scientists and Specialists, Including Health	165	13	100	\$32.62	152	93.0	6.9	0.0	Environmental Health Specialist	83.9
24	Database Administrators	284	44	120	\$37.48	240	71.5	23.9	4.6		83.7
25	Civil Engineers	147	41	240	\$40.25	106	87.3	10.0	2.7		83.6
26	Pharmacists	97	28	250	\$47.21	69	97.0	2.9	0.0	Pharmacist	83.6
27	Accountants and Auditors	549	445	970	\$35.60	104	79.1	17.1	3.7	Municipal Accountant; School Accountant;	83.5



# Real Time Jobs in Demand

## April 2009, All Jobs

Rank	Occupation Title	NJ # New Job Openings	NJ # New Unemp. Claims	NJ Average Annual # of Projected Openings	NJ Average Hourly Wage	NJ Labor Shortage (Openings-Claims)	US % with BA	US % with Some College	US % with High School	NJ Occupational License Needed	SCORE
(A)	(B)	(C)	(D)	(E)	(F)	(G)	(H)	(I)	(J)	(K)	(M)
<b>Top 50 Jobs, All Training and Education Combined</b>											
28	Social and Community Service Managers	265	42	130	\$34.77	223	71.5	19.6	8.9		83.3
29	Management Analysts	187	122	550	\$43.56	65	77.5	15.9	6.6		83.2
30	Financial Analysts	251	95	140	\$42.85	156	87.3	9.6	3.1		82.9
31	Physician Assistants	87	6	40	\$42.69	81	66.9	25.5	7.6	Physician Assistant	82.8
32	Market Research Analysts	233	52	140	\$34.41	181	82.2	13.5	4.4		82.8
33	Network and Computer Systems Administrators	225	155	470	\$36.79	70	50.2	41.5	8.3		82.4
34	Statisticians	82	3	20	\$39.21	79	93.3	6.1	0.0		82.2
35	Compensation, Benefits, and Job Analysis Specialists	162	16	80	\$30.63	146	55.5	30.4	14.1		82.1
36	Mechanical Engineers	244	98	120	\$40.50	146	78.2	18.3	3.5	Engineer-In-Training	82.1
37	Environmental Engineers	70	9	90	\$38.52	61	86.4	9.9	0.0		81.9



# Real Time Jobs in Demand

## April 2009, All Jobs

Rank	Occupation Title	NJ # New Job Openings	NJ # New Unemp. Claims	NJ Average Annual # of Projected Openings	NJ Average Hourly Wage	NJ Labor Shortage (Openings-Claims)	US % with BA	US % with Some College	US % with High School	NJ Occupational License Needed	SCORE
(A)	(B)	(C)	(D)	(E)	(F)	(G)	(H)	(I)	(J)	(K)	(M)
<b>Top 50 Jobs, All Training and Education Combined</b>											
38	Special Education Teachers, Preschool, Kindergarten, and Elementary School	169	41	360	\$27.30	128	87.2	8.3	4.5		81.9
39	Insurance Sales Agents	110	46	260	\$36.07	64	45.2	36.4	18.4	Insurance Producer	81.7
40	Transportation, Storage, and Distribution Managers	196	153	170	\$48.67	43	25.1	36.4	38.5		81.6
41	Computer Support Specialists	624	223	620	\$23.89	401	42.6	44.0	13.4		81.5
42	Training and Development Specialists	164	40	140	\$30.54	124	55.5	30.4	14.1		81.3
43	First-Line Supervisors/Managers of Office and Administrative Support Workers	589	440	850	\$25.05	149	28.9	43.1	28.1		81.1
44	Secondary School Teachers, Except Special and Vocational Education	81	31	1320	\$29.63	50	95.9	3.5	0.6	Teacher	81.1
45	First-Line Supervisors/Managers of Retail Sales Workers	950	399	950	\$21.38	551	24.6	36.7	38.8		81.0



# Real Time Jobs in Demand

## April 2009, All Jobs

Rank	Occupation Title	NJ # New Job Openings	NJ # New Unemp. Claims	NJ Average Annual # of Projected Openings	NJ Average Hourly Wage	NJ Labor Shortage (Openings-Claims)	US % with BA	US % with Some College	US % with High School	NJ Occupational License Needed	SCORE
(A)	(B)	(C)	(D)	(E)	(F)	(G)	(H)	(I)	(J)	(K)	(M)
<b>Top 50 Jobs, All Training and Education Combined</b>											
46	Medical and Clinical Laboratory Technologists	80	10	110	\$28.61	70	50.5	35.3	14.2		80.9
47	Chief Executives	168	106	80	\$92.50	62	65.2	21.8	13.0	Public Works Manager	80.7
48	Electrical Engineers	160	57	80	\$40.46	103	80.5	16.5	2.9		80.5
49	Technical Writers	115	20	70	\$30.32	95	74.4	18.4	7.2		80.2
50	Electronics Engineers, Except Computer	95	50	120	\$44.91	45	80.5	16.5	2.9		80.2



# *Real Time Jobs in Demand*

## **Reflects Various Educational and Training Levels**

### **College:**

- Associate degree
- Bachelor degree
- Graduate degree
- First professional degree

### **Training:**

- Post-secondary vocational education
- Short-term on-the-job training
- Moderate-term or long-term on-the-job training



# *Real Time Jobs in Demand*

- Data is revised every month
- Use these reports to get the best picture of New Jersey's job market today
- To see the full list of jobs in demand and for more information go to:

<http://lwd.dol.state.nj.us/labor/lpa/content/RealTimeJobsinDemand.html>

